

3 Chadwick Court

STOW ROAD, MORETON-IN-MARSH, GLOUCESTERSHIRE



HAYMAN-JOYCE

3 CHADWICK COURT

STOW ROAD
MORETON-IN-MARSH
GLOUCESTERSHIRE
GL56 0FS

FABULOUS GROUND FLOOR
APARTMENT WITH PARKING,
CLOSE TO THE SHOPS AND
STATION.

SITUATION

Moreton-in-Marsh is an attractive north Cotswold market town with comprehensive facilities including GP Surgeries, hospital, dentist, bank, restaurants, public houses, range of shops, supermarkets and popular Tuesday market

Within the catchment area for Chipping Campden School, a non-selective secondary school and sixth form with academy status

The award-winning Daylesford Farm Shop is about 8 miles away

The Members' Club, Soho Farmhouse, is about 16.5 miles away

Mainline station with train services reaching Oxford (from 40 minutes) and Paddington (from 92)

Other towns within easy reach are Stratford-upon-Avon (16 miles), Cheltenham (23) and Oxford (27)

Guide Price £225,000

HAYMAN - JOYCE

High Street, Moreton-in-Marsh
Gloucestershire
GL56 0AX
01608 651188
moreton@haymanjoyce.co.uk



THE APARTMENT

- Located in a popular courtyard development is this purpose-built south-facing ground floor apartment, within walking distance of the centre town with all its amenities and railway station
- Most spacious open plan sitting/dining room/kitchen with engineered oak flooring
- The kitchen has a full range of units and Zanussi appliances including oven with hob with extractor hood over, dishwasher, fridge/freezer and space for a washing machine
- Two double bedrooms
- Bathroom with shower over and heated towel rail
- Oak veneer internal doors
- This apartment is currently let and is achieving £1,250 pcm
- Remainder of 10-year NHBC warranty
- EPC Band B

OUTSIDE

- Communal courtyard with parking
- Communal garden area
- Refuse store and bicycle store

SERVICES

- Mains water, electricity, gas and drainage are connected
- Gas central heating with Nest controller operated via an app
- Double-glazing throughout
- Average broadband speeds advertised within this postcode are up to 73.3 Mbps if provider is BT

OUTGOINGS

- Council tax – band B
- Tax payable for 2026/27 - £1,876.04
- Ground rent currently - £200 per annum
- Annual service charge currently - £1,541.98

TENURE & POSSESSION

- Leasehold with vacant possession on completion
- 143 years remaining

DIRECTIONS

- From the agent's office head south on the A429 (Fosse Way)
- Go over both mini-roundabouts and Chadwick Court will found on the left after a short distance
- what3words: lecturing.offstage.followers

VIEWING

- Strictly by prior appointment with the sole selling agents:

H A Y M A N - J O Y C E
01608 651188



MIM230024 / 625082

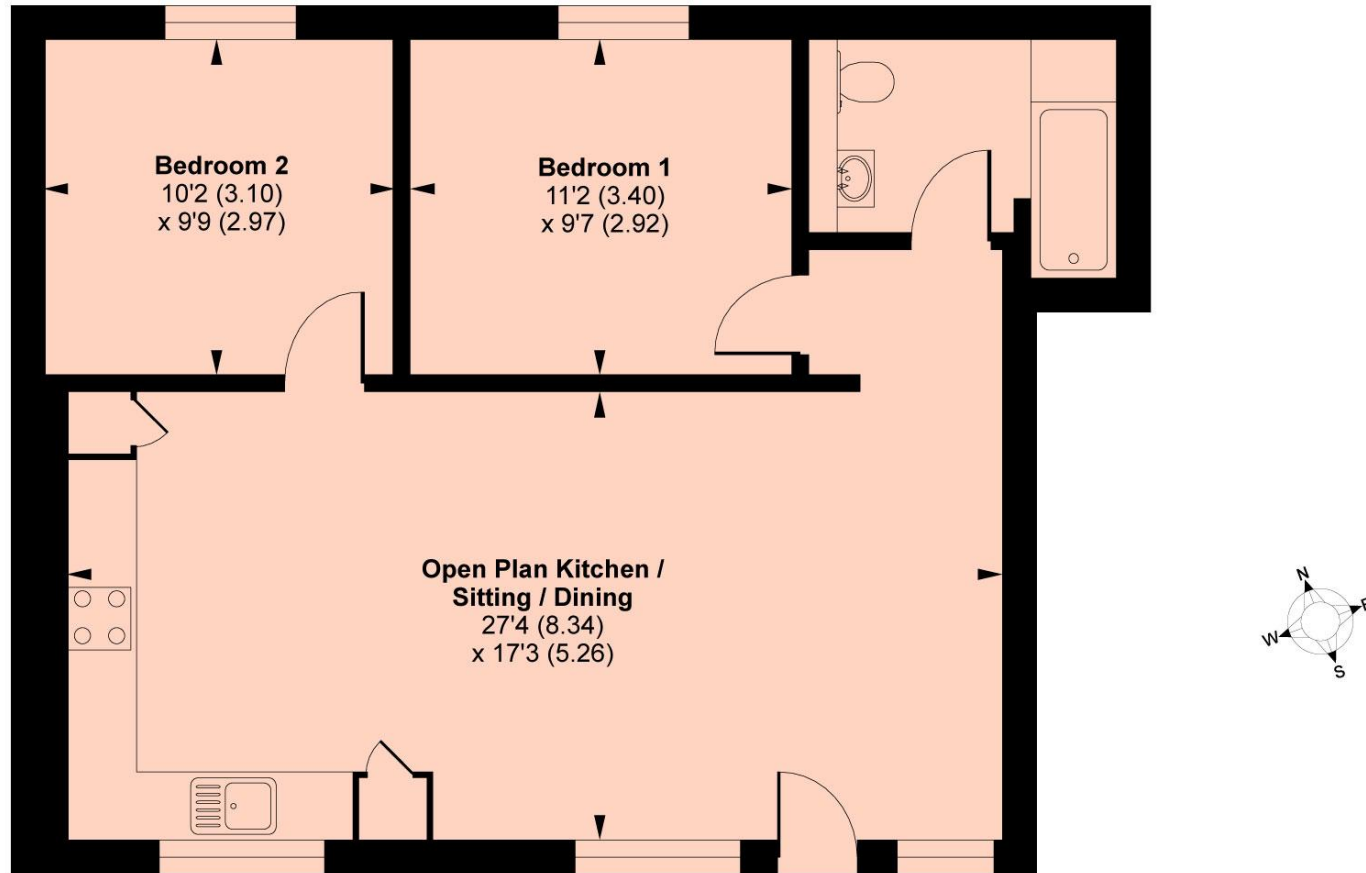
IMPORTANT NOTICE

1. Although we have used our best endeavours to ensure that everything in these particulars is correct no description or information should be relied on as a statement or representation of fact. All measurements, areas or distances are given as a guide only and should not be relied on as fact.
2. We have no authority to make any representations and all information is given entirely without responsibility on our and the vendors behalf.
3. Photographs are taken in good faith, but only show certain parts of the property. Unless otherwise stated photographs were taken at the time of, or since, the property's initial marketing.
4. Where reference is made to planning permissions or existing or potential uses, such information is given in good faith, but we cannot confirm that necessary consents exist or are valid. There may be legal restrictions on the property of which we are unaware.
5. We are unable to comment on the state of repair of the property, nor can we confirm that any services, equipment, facilities or appliances are in satisfactory working order.
6. Council tax bandings given are the current assessments. If improvements have been carried out to the property since April 1993, this banding may be reviewed.



Chadwick Court, Stow Road, Moreton-in-Marsh, GL56 0DW

TOTAL APPROX. GROSS INTERNAL FLOOR AREA 681 SQ FT 63.3 SQ METRES



GROUND FLOOR

Whilst every attempt has been made to ensure the accuracy of the floor plan contained here, measurements of doors, windows and rooms are approximate and no responsibility is taken for any error, omission or misstatement. These plans are for representation purposes only as defined by RICS Code of Measuring Practice and should be used as such by any prospective purchaser. Specifically no guarantee is given on the total square footage of the property if quoted on this plan. Any figure given is for initial guidance only and should not be relied on as a basis of valuation.

Copyright nichecom.co.uk 2019 Produced for Hayman-Joyce REF : 563181

HAYMAN-JOYCE

M O R E T O N - I N - M A R S H • M A Y F A I R
h a y m a n j o y c e . c o . u k